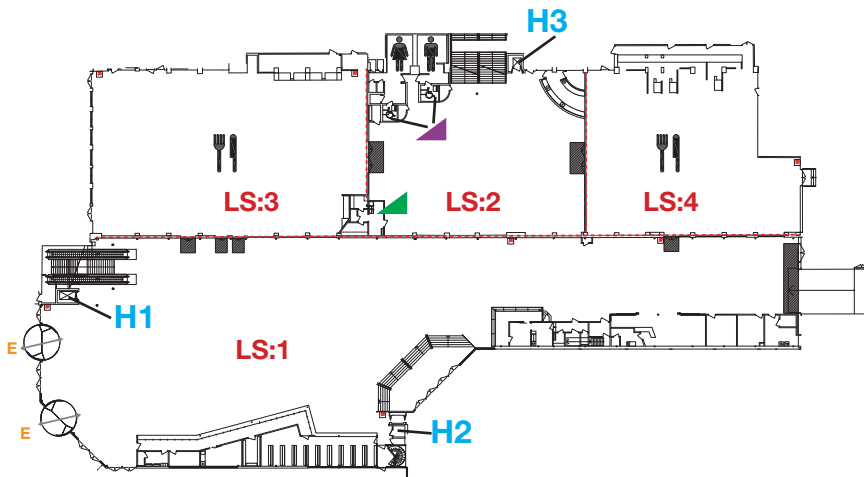
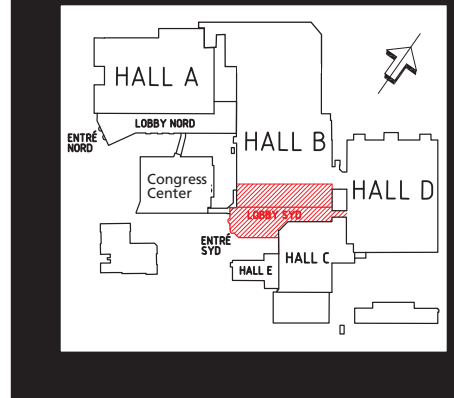
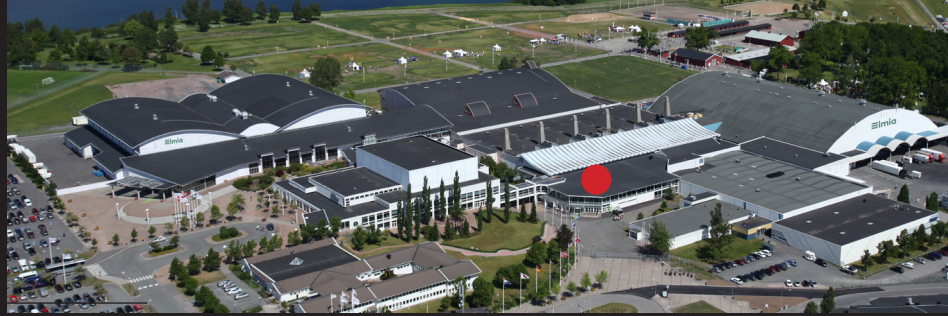





Lobby Syd

Lobby Syd holds our newest entrance as well as information center, cloakroom and several restaurants and coffee shops. Lobby Syd is located in direct connection with the Congress Center, Hall B, D and C. Lobby Syd has built-in, illumination equipment to create a variety of atmospheres for galas and functions.



E Visitor entrance

-  Fire hydrant
-  Nursery room
-  Restroom
- H1** Elevator 1
door: 90x200 cm
area:210x110 cm
8 people, 630 kg
- H2** Elevator 2
door: 90x200 cm
area:160x110 cm
10 people, 750 kg
- H3** Elevator 3
door: 90x200 cm
area:110x110 cm
6 people, 500 kg

Section	LS:1	LS:2	LS:3	LS:4
Floor space, (ca) m ²	2 300	510	800	545
Overhead ceiling clearance, m	6,0	3,2	2,8	3,1
Floor loading, kg/ m ²	1 000	1 000	1 000	1 000
Comfort cooling	yes	yes	yes	yes
Basic lightning	yes	yes	yes	yes
Daylight	yes	no	yes	no

Main Services (can be rented from Exhibitors Services)	Yes	No	Comments
Electricity 220 V 10 A	x		
Electricity 400 V 16-125 A	x		
Electricity 400 V 150-400 A		x	
Water	x		1/2 connection, pressure up to 5 kg/sq. cm
Waste Water	x		under certain circumstances, contact Exhibitor Service
Compressed air	x		under certain circumstances, contact Exhibitor Service
Wire suspension from ceiling	x		strictly LS:1
WiFi	x		
High Speed Internet	x		